

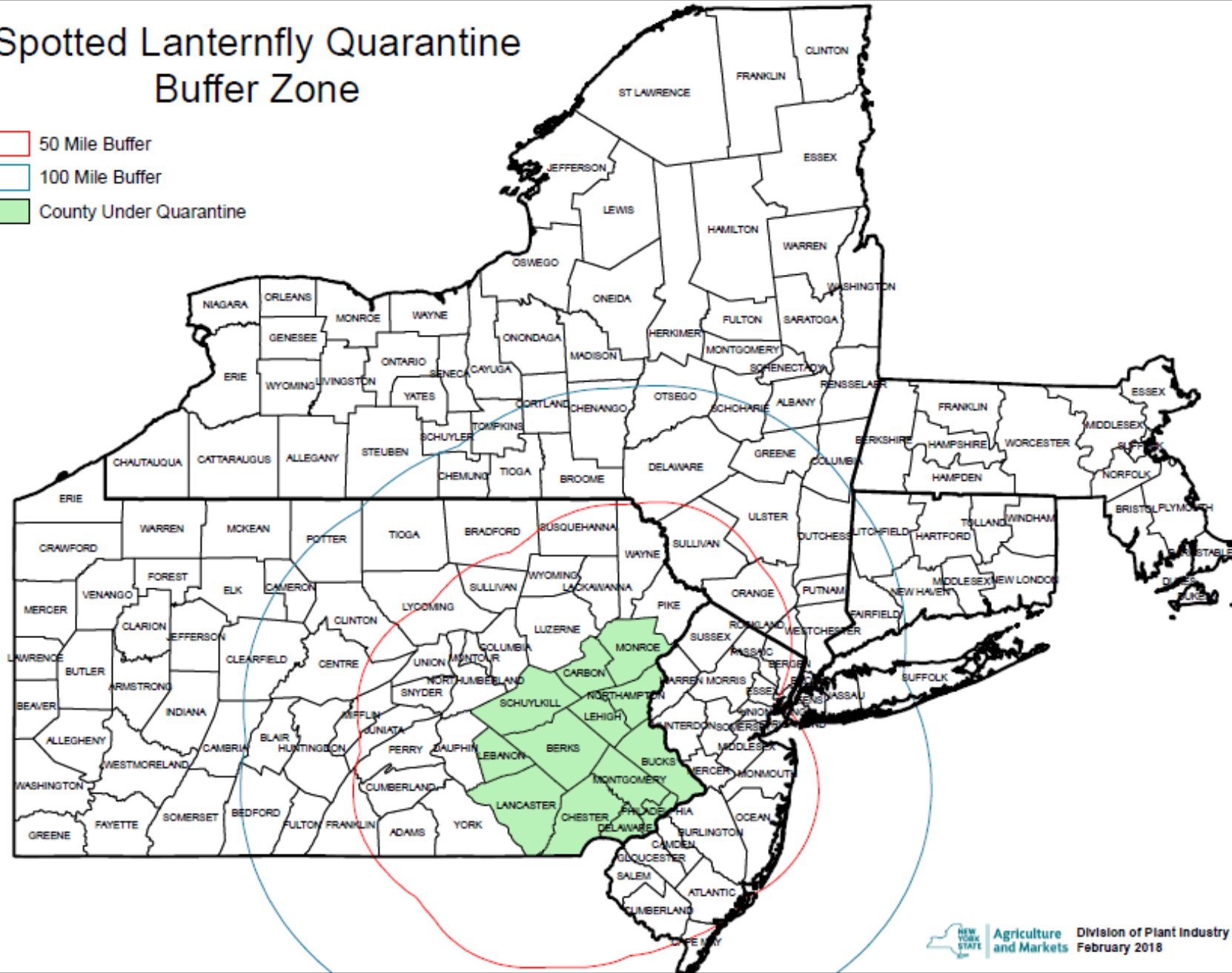


**Agriculture  
& Markets**

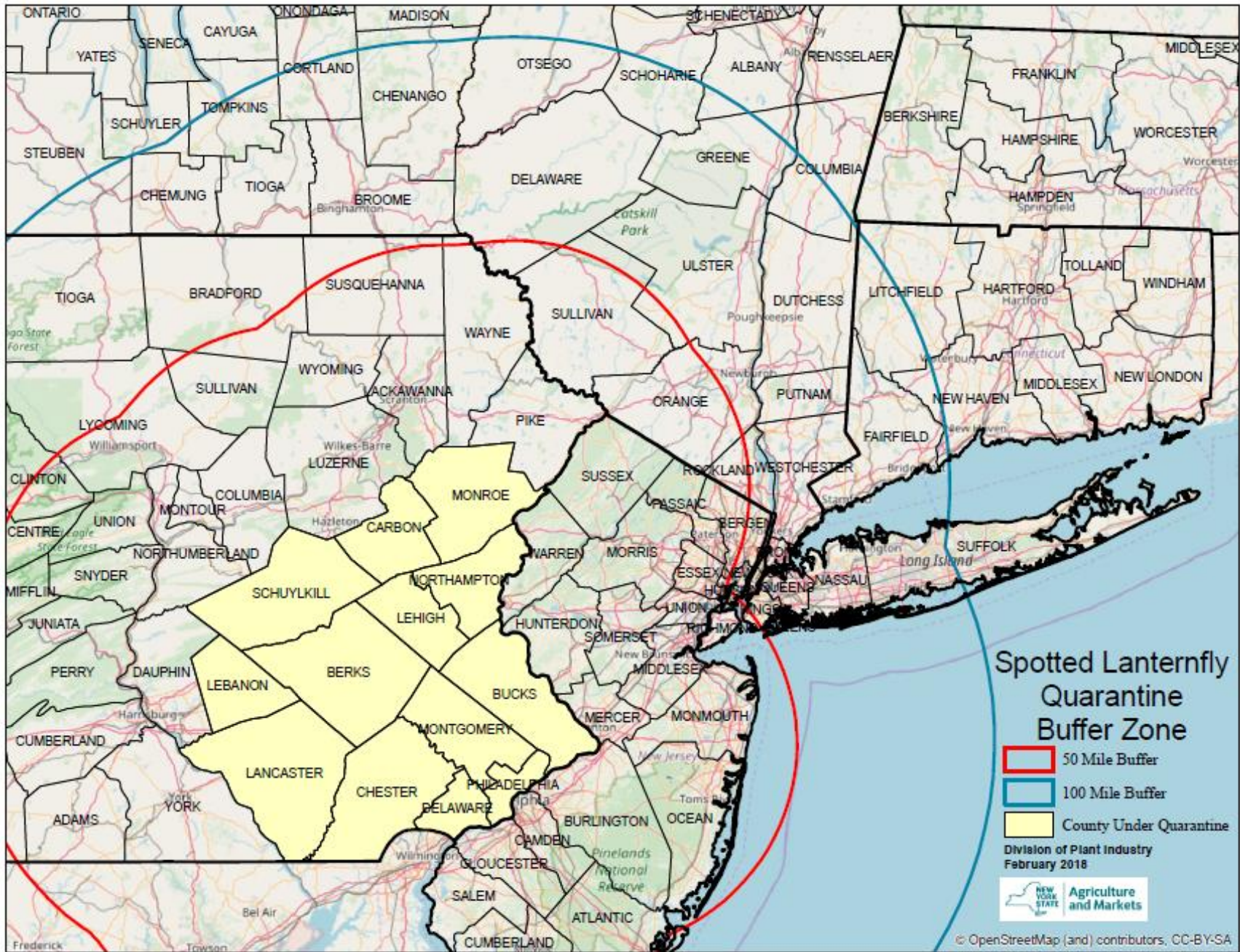
# Spotted Lanternfly

# Spotted Lanternfly Quarantine Buffer Zone

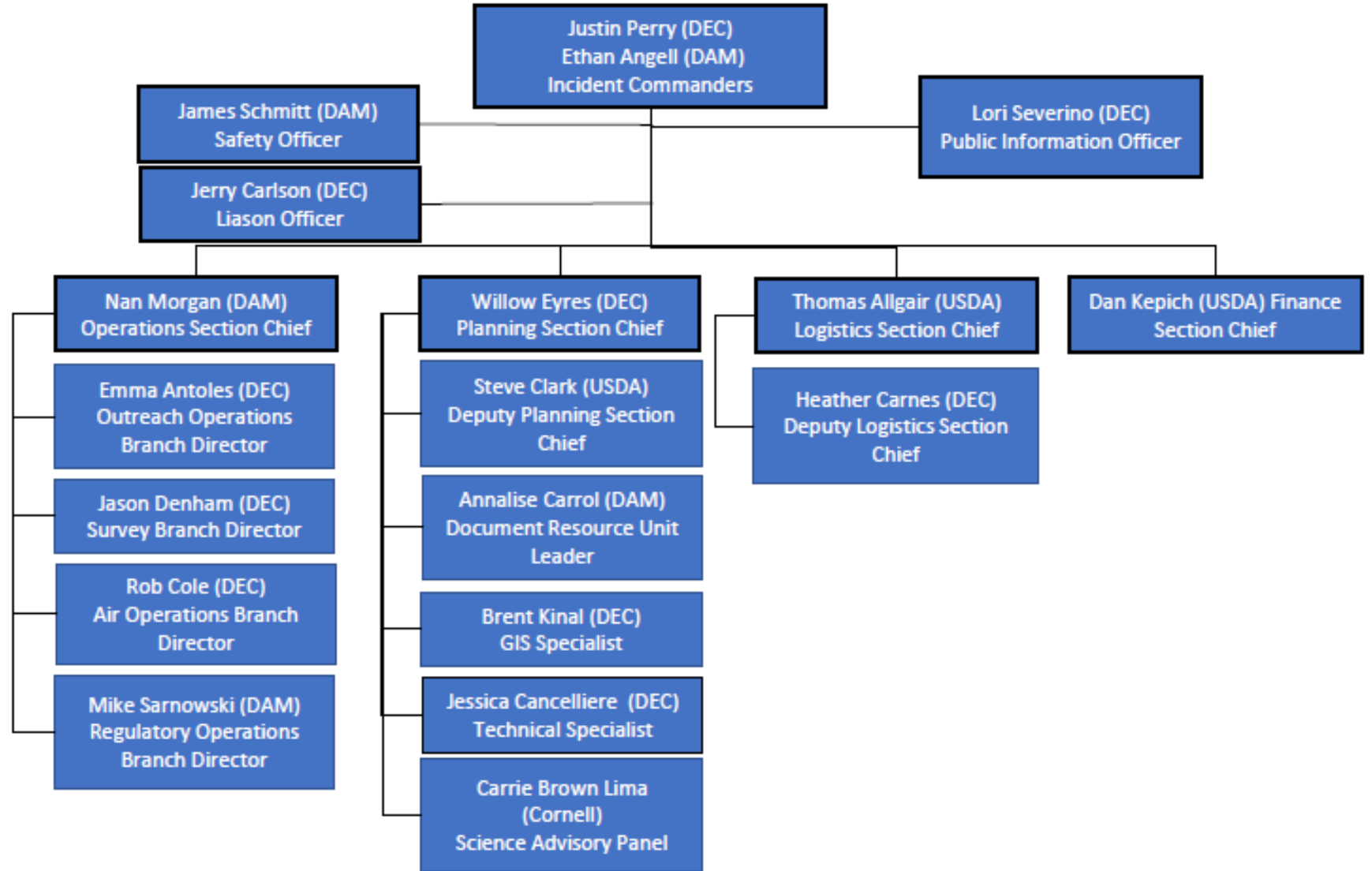
- 50 Mile Buffer
- 100 Mile Buffer
- County Under Quarantine







# ICS Structure



Response  
Plan

---

# Outreach

---

# Survey

---

# Regulatory



**Agriculture  
& Markets**

# Regulatory Plan

- Check points
- Nursery Grower and Dealer Inspection
- Stone Yards
- Wood Products
- Campgrounds
- Christmas Tree Vendors and Tree Lots
- Warehouses, Distributions Centers, and Parcel Facilities
- Rail Yards

	JAN	FEB	MAR	APR	MAY	JUN	JUL	AUG	SEP	OCT	NOV	DEC
Growers / Dealers												
Check Points												
Campground												
Christmas Tree												
Wood Products												
Stone Yards												
WDCIP												
Rail Yards												



# Authority and Inspection



# Phase 1 – Nursery Inspection, Shipment Inspection, and Checkpoints

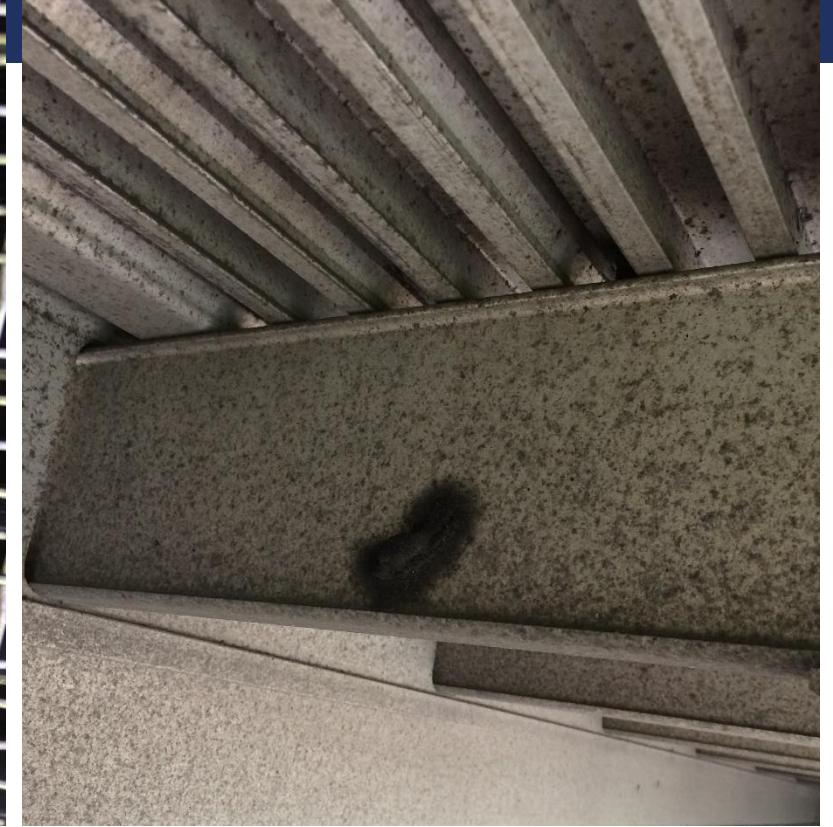
- Nursery Grower and Dealer inspections focus on **products** from PA and VA.
- All products are visually inspected for signs of spotted lanternfly with close examination of products coming from quarantine and infested areas.
- If the product shows signs of SLF we follow our division's quarantine procedures. Inspector contact's their supervisor as per our quarantine procedure. The supervisor with the Albany Office and the SLF ICS team will make a decision based on our response plan in consultation with the Inspector.



## Incoming Inspection

- Thoroughly examine the truck and if applicable contents of the shipment for any plant pests.
- Verify the origin of the shipment and if the shipment has the appropriate certification as required under state regulations
- All incoming shipments documented on the PI-74





What we see and look at!





# Inspections using UAV

---

# PA Compliant Companies



# 163. Prevention of introduction of injurious insects, noxious weeds, and plant diseases.

- The commissioner shall take such action as he may deem necessary to prevent the introduction into this state of injurious insects, noxious weeds, and plant diseases, provided that he shall consult with the commissioner of environmental conservation prior to the commencement of any action to eradicate noxious weeds







## Section 167. Access to premises: quarantines; rules and regulations.

- The commissioner or his representatives shall have full access to all premises, places, farms, buildings, vehicles, airplanes, vessels and cars for the purpose of enforcing the provisions of this article. The commissioner or his representatives may examine trees, shrubs, plants and vines, soil, or host plants or any other material which are infested or infected or susceptible to infestation or infection by injurious insects or plant diseases, or contaminated by noxious weed. He or they may open any package or other container, the contents of which may have been so infested or infected or contaminated with noxious weed or which have been exposed to such infestation, infection or contamination. It shall be unlawful to hinder or defeat such access or examination by misrepresentation, concealment of facts or conditions, or otherwise

# Results of Operation Spotlight

- 6 checkpoints conducted
- 208 commercial vehicles inspected
- Only 5 aware of spotted lanternfly
- 24 were from PA quarantine area
- Only 3 were compliant



# Questions & Answers